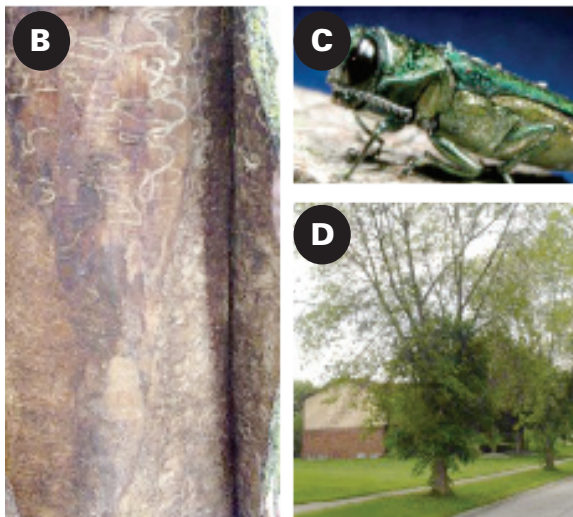


SAVE YOUR TREE FROM EMERALD ASH BORER!

The Emerald Ash Borer (EAB)
is an invasive pest that will kill
any untreated ash trees.



Life Cycle of Emerald Ash Borer

- A) The larvae live under the bark of the tree, feeding on the vascular cambium.
- B) The larval feeding leaves 'galleries' under the bark that interrupt nutrient flow to the canopy and eventually kill the tree.
- C) The adult is a small, metallic green beetle only 10-15 mm in length. The adults typically emerge around June, leaving D-shaped exit holes in the bark. The adults feed briefly in the tree canopy before reproducing and laying eggs in the twigs and branches.
- D) The larvae will start feeding in the branches at the top of the tree and work their way down. The first symptom in an infested tree is dieback in the tree canopy.

Symptoms of Emerald Ash Borer

- Dieback in tree canopy
- New sprouts forming from the tree's base
- "D" shaped exit holes
- Woodpecker damage

Ash Tree ID

- E) Young Ash Tree - bark is relatively smooth
- F) Mature Ash Tree – deep ridges form as the ash tree ages
- G) Ash leaves typically have 5-9 leaflets per leaf, arranged directly opposite of each other.

If Your Tree Has Symptoms,
IT'S NOT TOO LATE!

Call Us!



SAVING YOUR TREES SAVES YOU MONEY!

The Emerald Ash Borer (EAB) outbreak has homeowners wondering what to do with their trees. Do I remove and replace, treat or ignore the problem all together? If you remove the tree or ignore the problem, you end up with the same result...**NO trees.** If you treat the problem you end up with a healthy tree that will be on your property and increase your home's value for years to come.

Why use the Arborjet® Tree Injection Method?

- ✓ Unlike spraying or soil drenching which put chemicals in the air and ground, Arborjet's injection puts all product inside the tree during application.
- ✓ We have up to 2 years proven control of EAB.
- ✓ No other injection method has the proven results against EAB like we do.

**For less than the cost of your monthly cable and internet bill,
SAVE A TREE FOR 2 YEARS!**



Untreated Ash Tree (A) Compared to an Ash Tree Treated with Arborjet (B)

Call Us!

ARBORJET®
Revolutionary Plant Health Solutions